



INTANGIBLE

An exhibition by

THE ZONE

Artists

Bronwyn Lace and Marcus Neustetter

Philosopher

Johannes Jaeger

Curator

Basak Senova

28. 03 – 03. 05 2025

Galerie Rauminhalt, Vienna

In cooperation with [nexus art_science](#)

In collaboration with the [Pushing the Boundaries Project](#)

nexus
art+science

rauminhalt_harald bichler
space & content


JOHN TEMPLETON
FOUNDATION

 **universität**
wien



The exhibition “Intangible” marks the first collaboration between **The ZoNE** and **nexus_art + science**. It consists of a dynamic dialogue between science, philosophy, and art, and invites visitors to think beyond conventional narratives and models of knowledge. The focus is on the question of how life organises itself and the agency of organisms that springs from it – a new, alternative paradigm that challenges the mechanistic world view of modern science.

‘Intangible’ – the interdisciplinary examination of organismic agency

The exhibition is an artistic reflection of the research project Pushing the Boundaries, which is located at the Department of Philosophy at the University of Vienna. Funded by the John Templeton Foundation and led by biologist Johannes Jäger and philosopher Tarja Knuuttila, the project examines the fundamental distinction between the living and the non-living.



The exhibition consists of three parts:

The Ontology of the Undefinable

Contra Wittgenstein: Whereof we cannot speak, thereof we must. Otherwise we will never be able to see clearly the limits of our knowledge, especially when it comes to the living.

Beyond the Age of Machines

As the exhibition unfolds through a dynamic dialogue, a book project is emerging from this interdisciplinary debate. Beyond the Age of Machines reflects on and documents these processes. It sheds light on the difference between living beings and artificial systems. It questions the limits of the mechanistic view of the world, and explores how organisms organise themselves and act on their own behalf – an agency that machines fundamentally lack.

Worldmaking

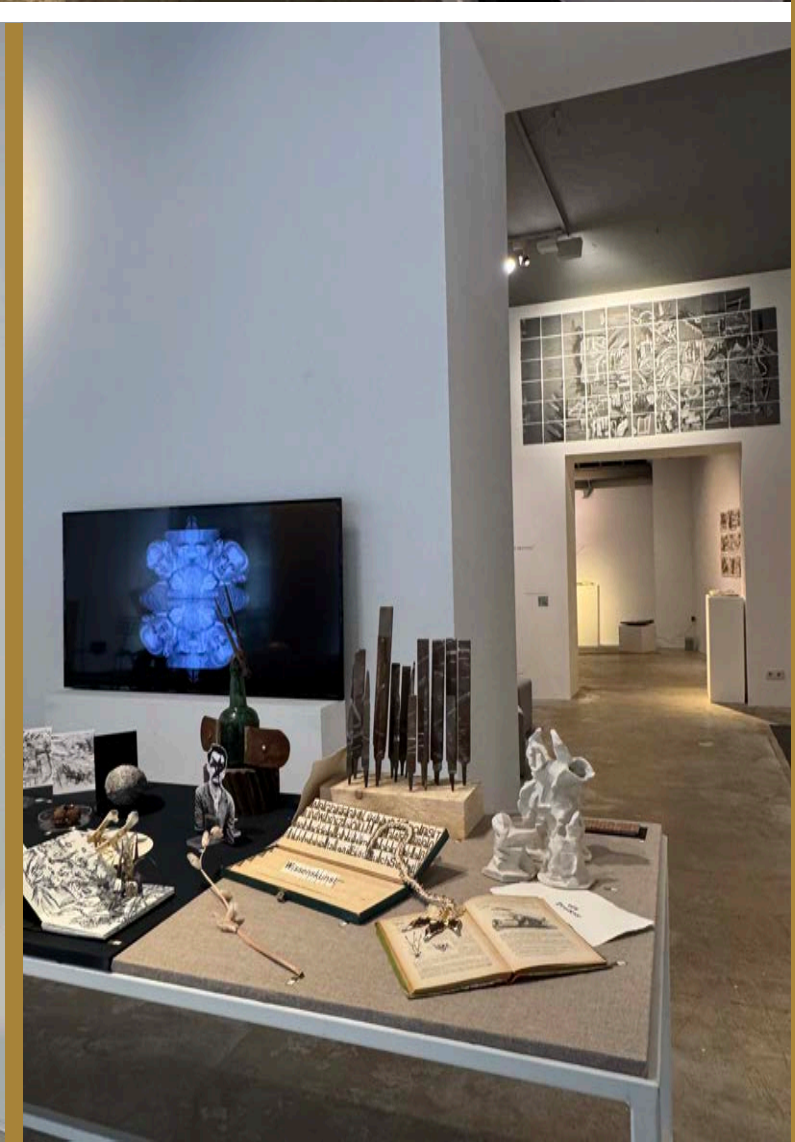
Every living being brings forth a world. Our subjective experiences become reality through our actions. We need to scrutinise how modern science and society deal with this self-determined aspect of reality. Art, philosophy and science meet on an equal footing in this exhibition. Visitors enter a space in which they are guided through dynamic arrangements of displays, videos and installations. Scientific processes are made tangible through artistic methods.

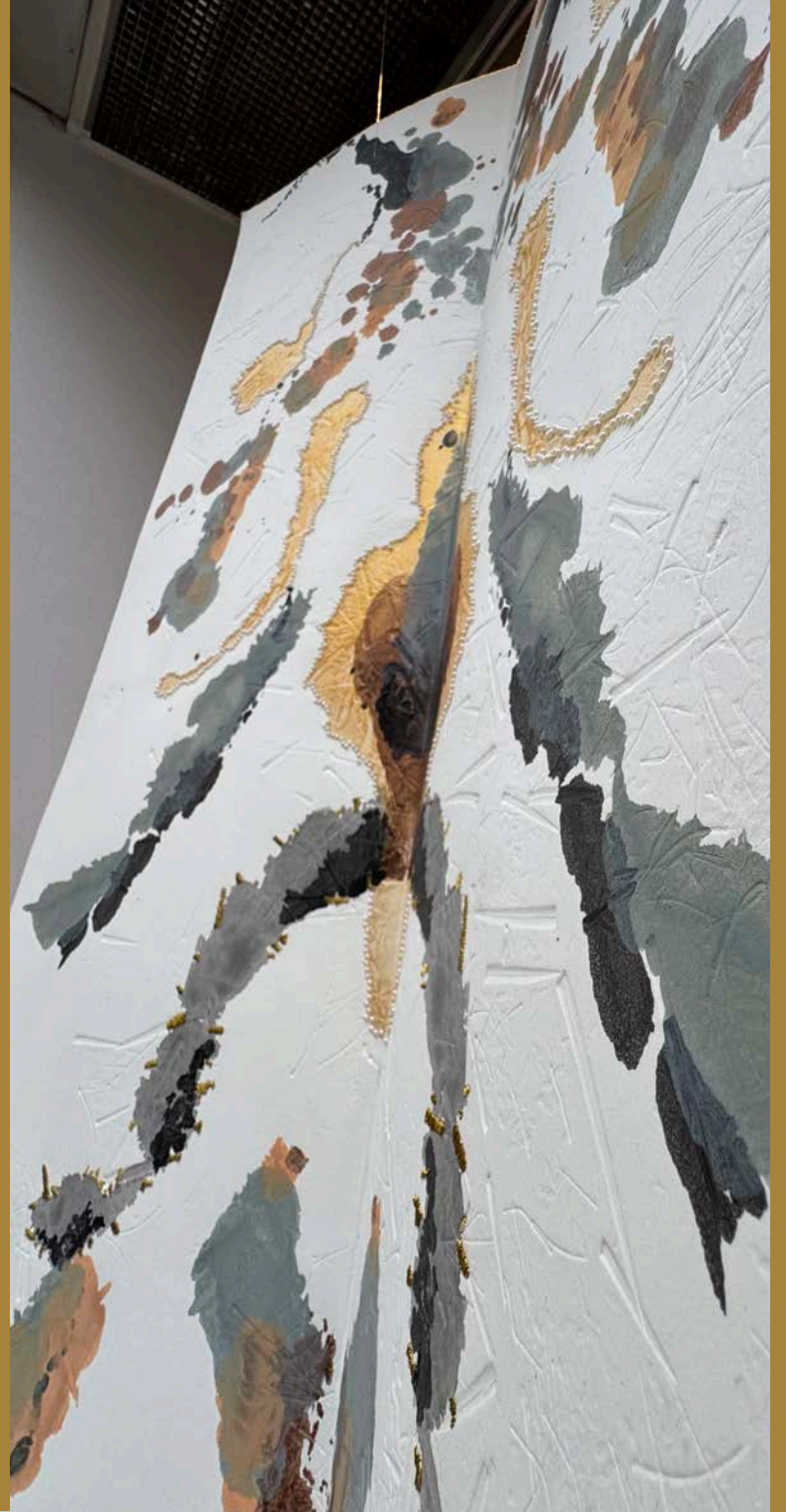


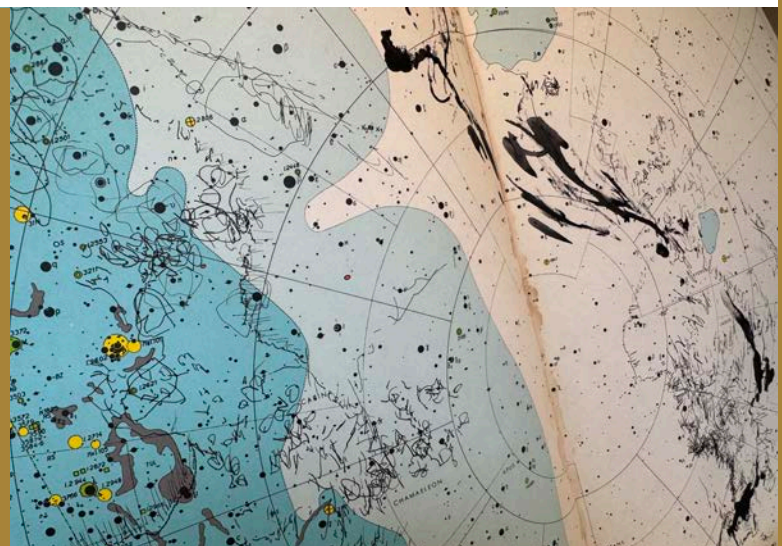
The Ontology of the Undefinable

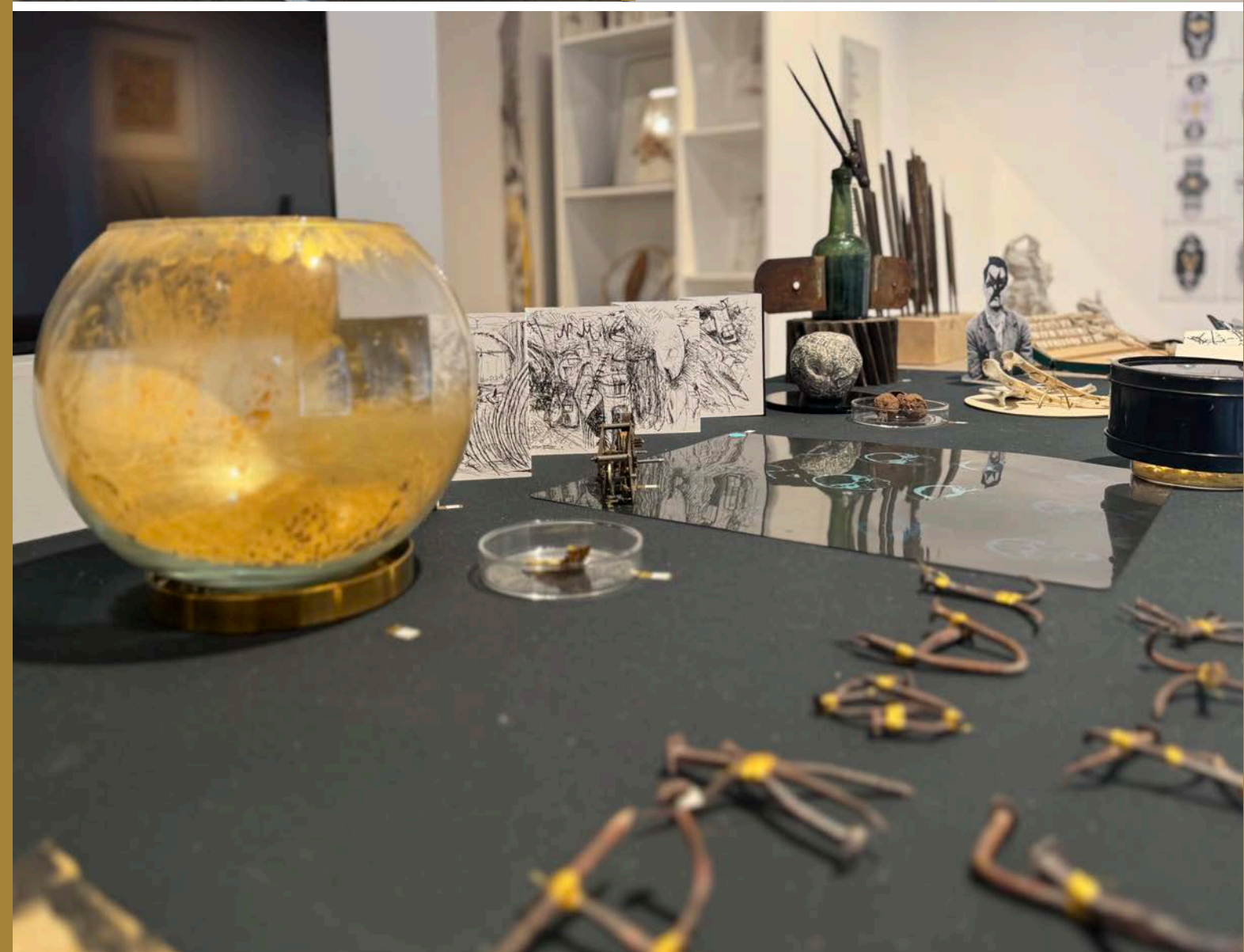
A













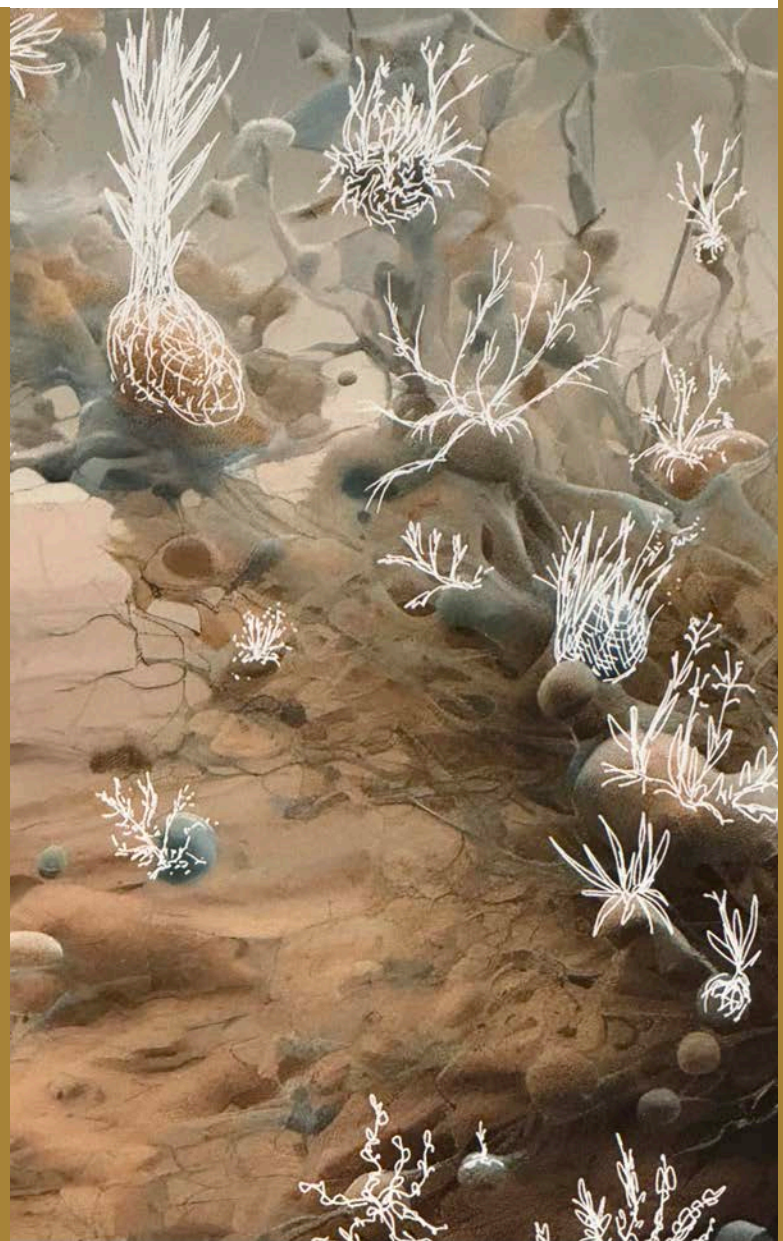
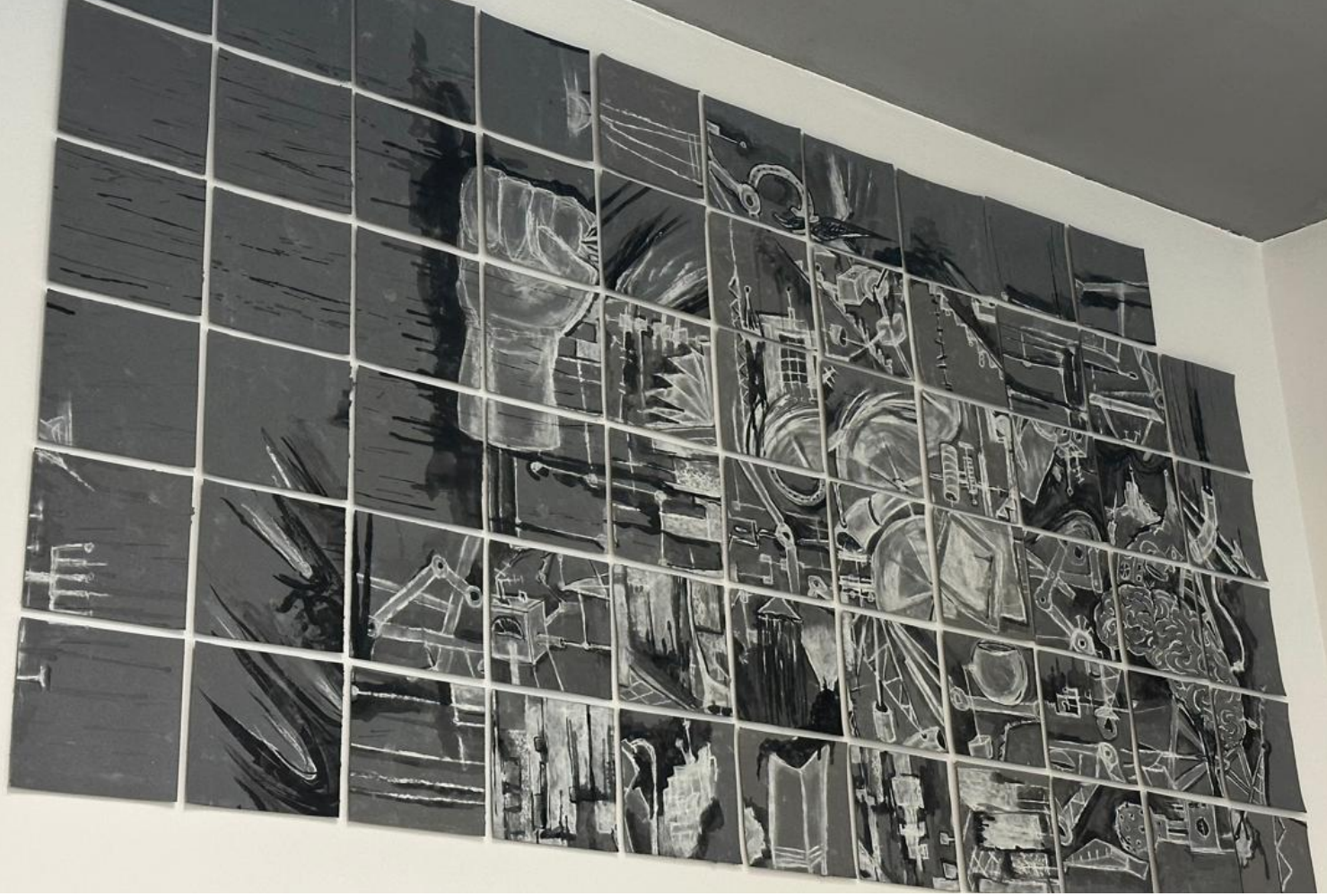
Beyond the Age of Machines

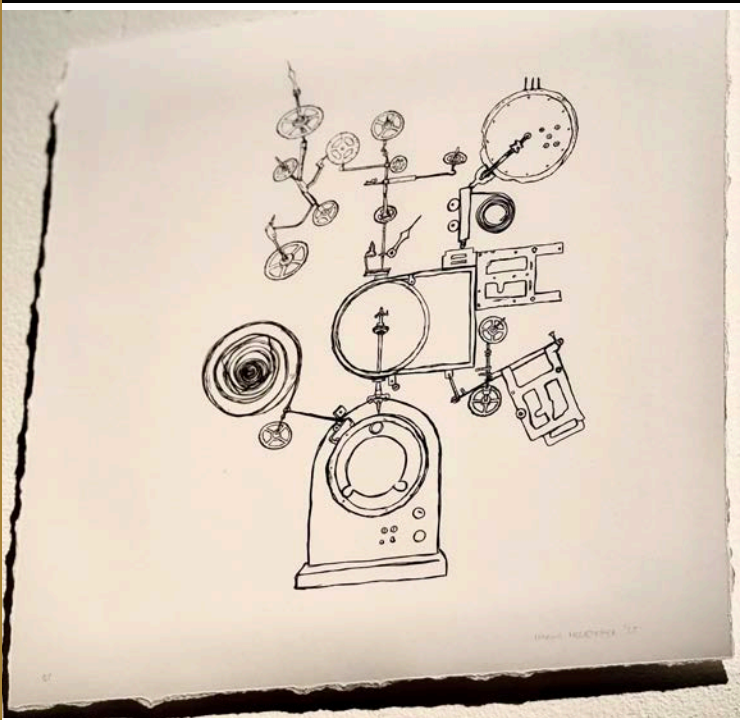
B

“Our map is not the territory.”

To read the emerging book:



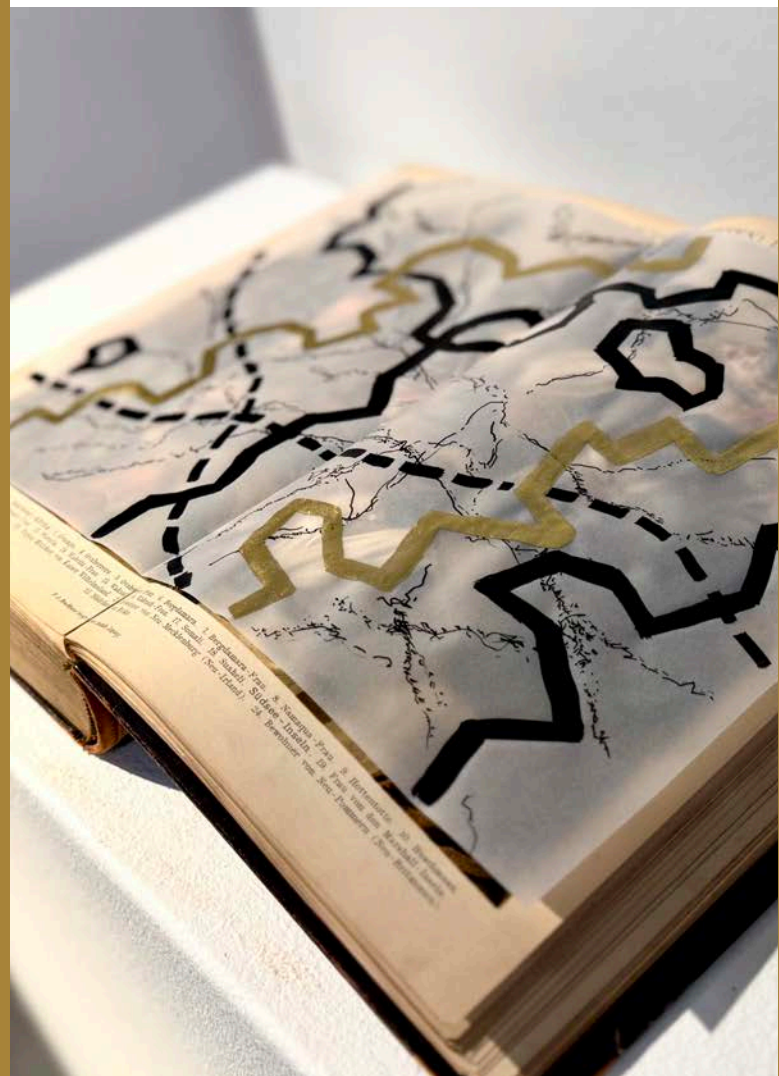


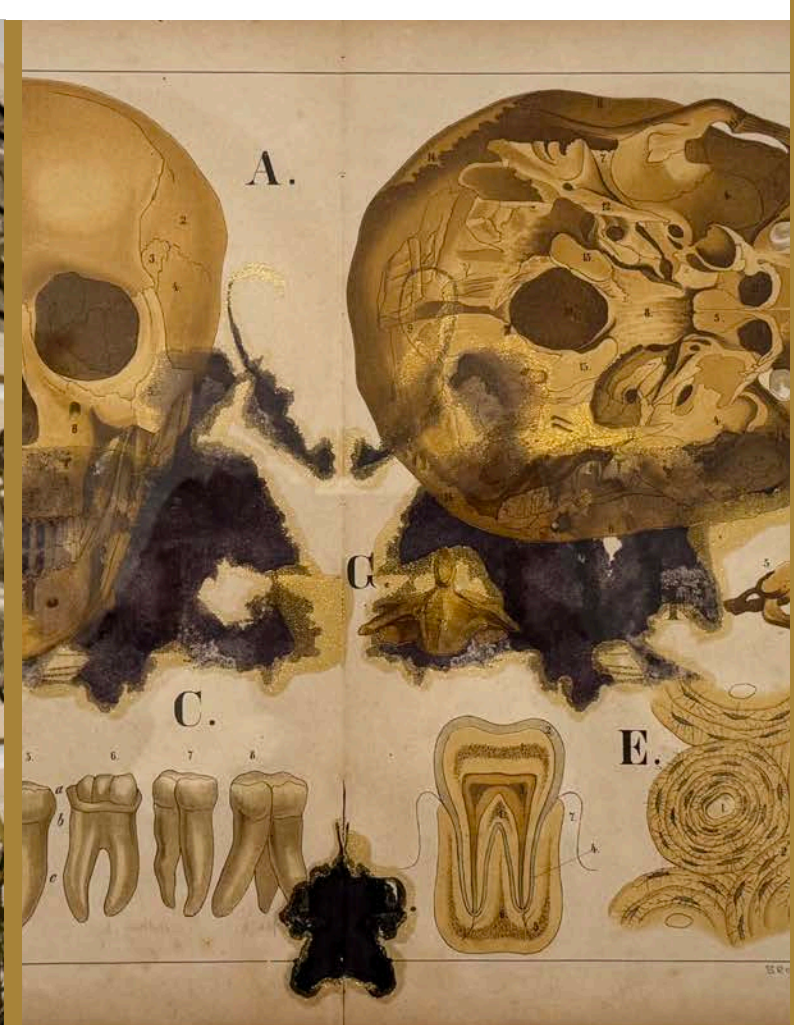


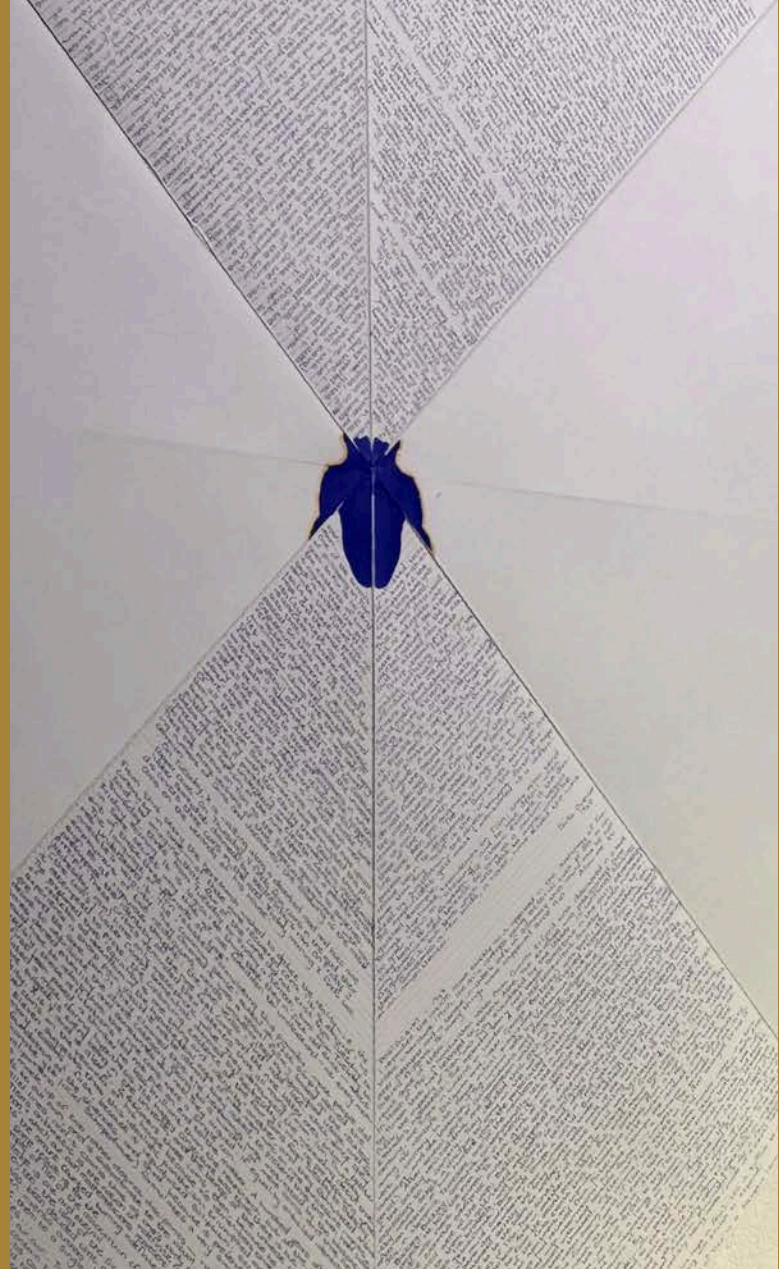


Worldmaking

C







TABLE

1. Dung ball on lab frame
2. Finding the Basilisk Bird print ed.5
3. Naked Eye Observation, model and beetle
4. Double bronze pelvis
5. Plato's Cave I, II & III
6. Excavation Book
7. Found shell and gold leaf
8. Found butterfly & gold ink
9. Fish bowl & gold dust
10. Rusty nail hieroglyphics
11. Leporello drawing book I, Natural History Museum
12. Clock mechanism
13. Skull xray
14. Magnifier & bees in gold dust
15. Three dung balls
16. Carved clay ball
17. Jaw, wish, pelvis & beak
18. Not Alexis O. van Tlön
19. Leporello drawing book II & metal dragonfly
20. Midden assemblage
21. Filing tool assemblage
22. Three earth forms
23. Science textbook & Finding the Basilisk Snake cut-out
24. Alphabet typewriter
25. Dried flower
26. Modelling bricks

SHELF

27. Letraset cards
28. Flat earth
29. Finding the Basilisk Double Winged Bird & embossing
30. Leporello drawing book III
31. Unfold ZoNE, gold leaf on folded paper
32. Intangible I, ink drawing on Plexiglass
33. Intangible II, ink drawing on Plexiglass
34. Intangible III, ink drawing on Plexiglass
35. Leporello drawing book IV
36. Outside the Domain I, ink drawing on paper
37. Outside the Domain II, ink drawing on paper

Sound components throughout show by Bronwyn Lace in collaboration with musicians:

Bongile Gorata Lecoge-Zulu, Micca Manganye, Clare Loveday, Xolisile Bongwana, Nhlanhla Mahlangu, Dikeledi Modubu, Anathi Conjwa, Vusi Mdooyi
Sound engineer: Zain Vally

ROOM 1 | THE ONTOLOGY OF THE UNDEFINABLE

A

38. Choosing Ancestors, 64 Ink, paper cutouts, plexiglass & mirror
39. Skinned and Pressed, mixed media on cotton rag paper
40. Ludwig I - IV, Mixed media on craft paper
41. Of Hands I, II & III, Photographs on aluminium, ed.3
42. Finding the Celestial, drawing on found maps & music stands
43. Outside the Domain III, IV, V, VI, VII, ink drawing on paper
44. Intangible, painting on canvas, wooden headrests & gold leaf
45. Finding the Basilisk miniatures I - VI, mixed media, cotton rag
46. Embalmed Honey & Basilisks I & II, mixed media, cotton rag

SCREEN 1

Wheeling Philosophers
What Ludwig Said
Surface Scratching
Mapping Tools
Finding the Basilisk
Of Machine
Of Hands
Committing to Ink

ROOM 2 | BEYOND THE AGE OF MACHINES

B

47. Beyond the Age of Machines, chapter posters I - X, ed. 100
48. Age of Machines I - V, digital drawings, ed. 10
49. Kairos, Wisdom and Metamodernity, ink and chalk drawing
50. Mysterianism, ink and chalk drawing

SCREEN 2

Beyond the Age of Machines, book chapters animated I - VII

DESK

Mechanistic Maps, AI and digital drawings, small: ed. 100, large: ed. 100

ROOM 3 | WORLDMAKING

C

51. Schutzgebiete, encyclopaedia and map drawing
52. The Viewer, 1953 slide viewer, astronomical slides & drawings
53. Skull meets Pelvis, ink on encyclopaedia paper
54. To Moonate, folded paper, ink, encyclopaedia paper & vinyl
55. Crossing Ethnographies, encyclopaedia drawings

